



# Balanced System® Illustrations

2025

*supporting change*



# Terms of Use



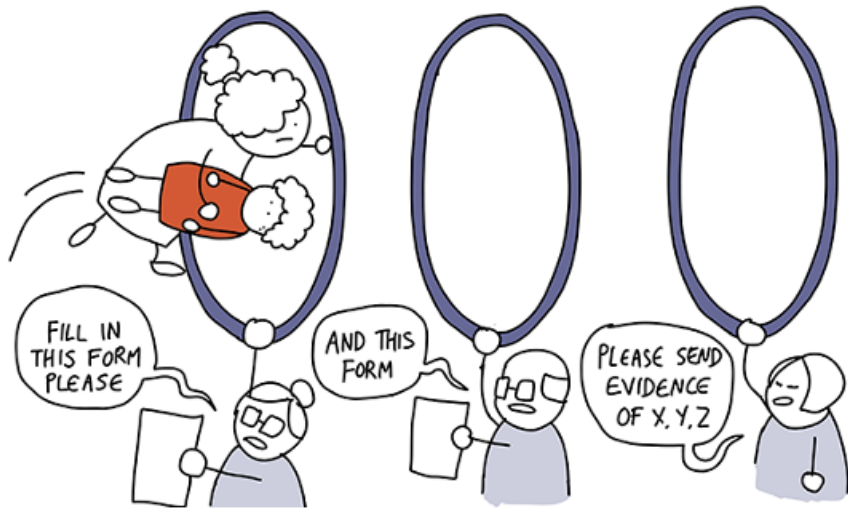
- The Balanced System® illustrations in this presentation may be used by services and local areas that are working with Better Communication CIC to implement the Balanced System® Outcomes Framework and Delivery Model.
- Permission is granted to use each slide in its entirety as presented in this slide deck.
- The images and slides must not be edited or presented with any other organisational branding.

*supporting change*

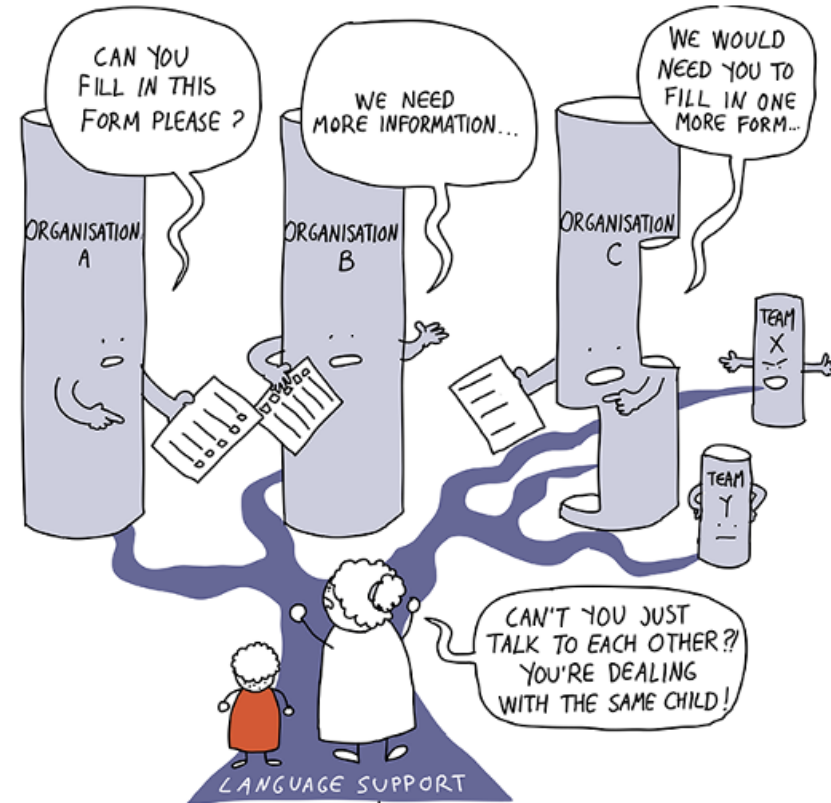


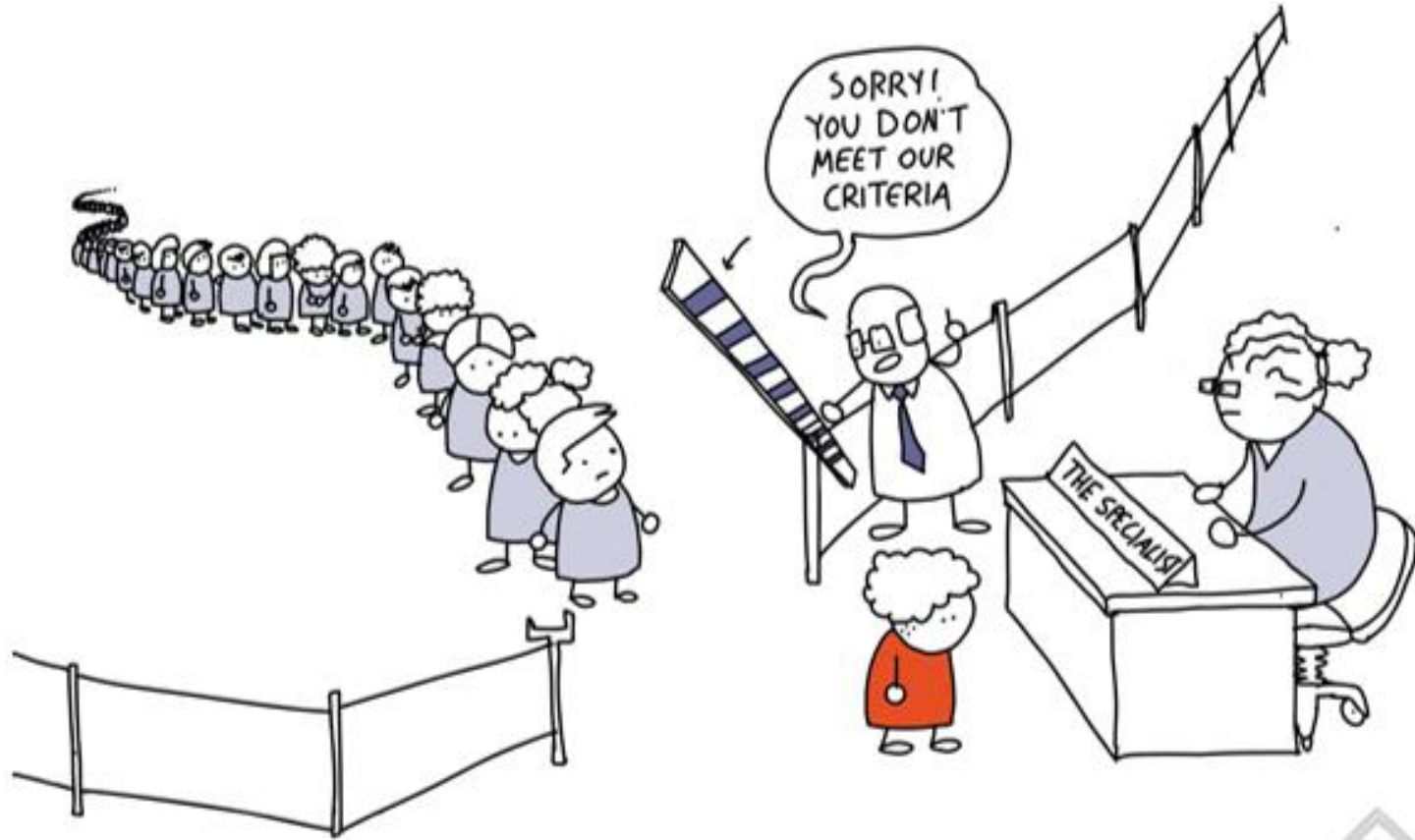
# THE BALANCED SYSTEM CHALLENGES CURRENT SYSTEMS AND PROCESSES

SUPPORT IS OFTEN DIFFICULT TO ACCESS



THE CURRENT SYSTEM IS SILOED AND DISJOINTED

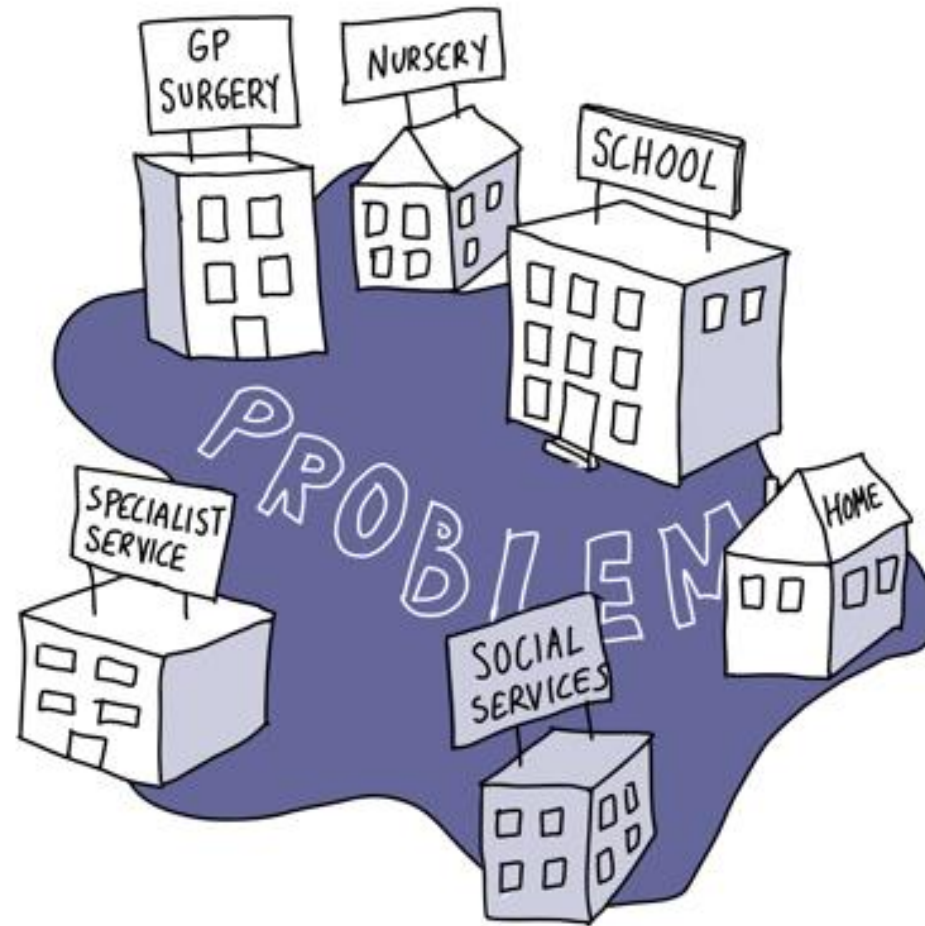




www.businessillustrator.com



BOUNDARIES, WHY SHOULD WE ?



[www.thebalancedsystem.com](http://www.thebalancedsystem.com)

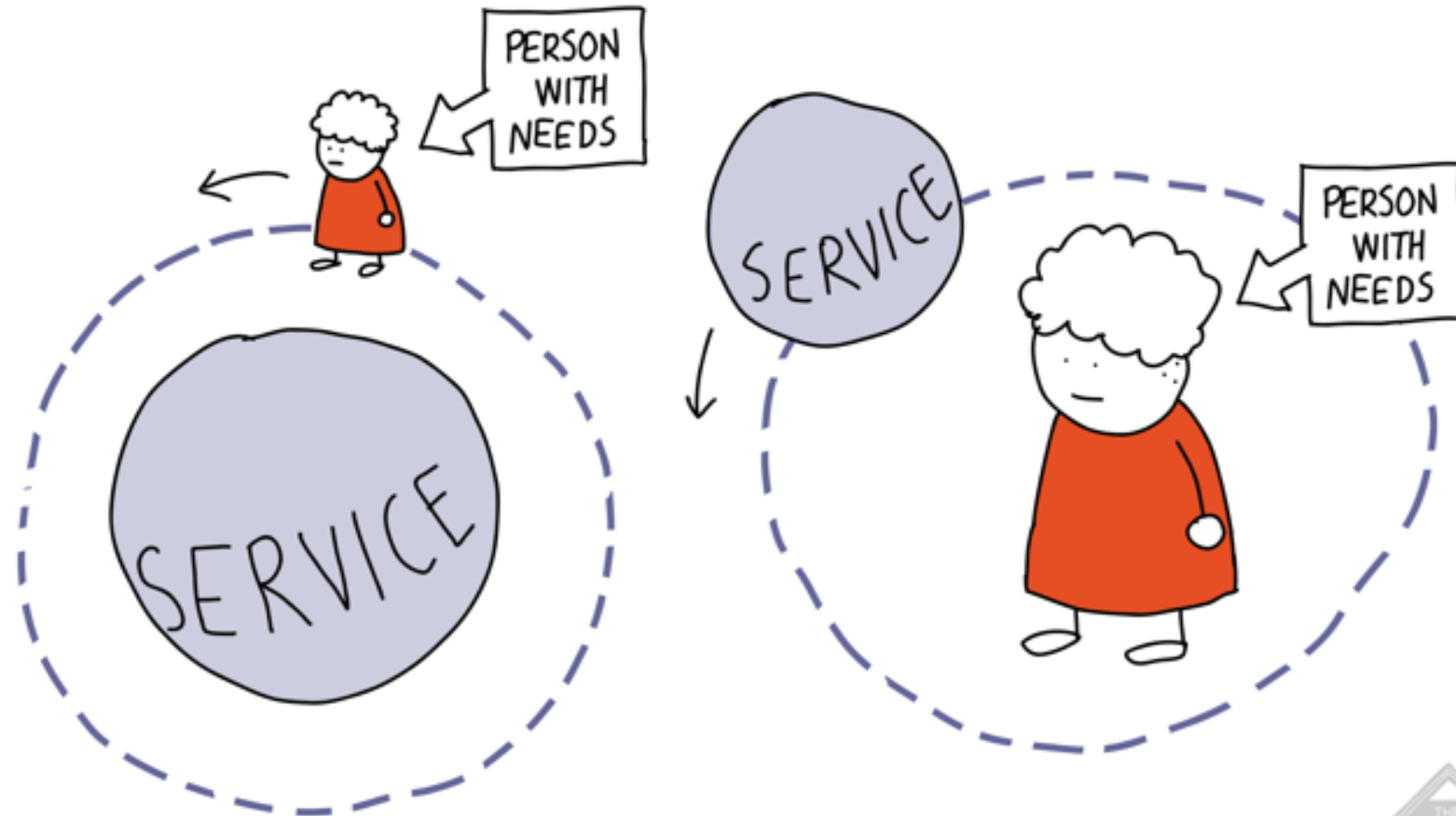


© M.T.GASCOIGNE , 2008-2025 [WWW.THEBALANCEDSYSTEM.ORG](http://WWW.THEBALANCEDSYSTEM.ORG)

The Balanced System® cartoon by Virpi Businessillustra

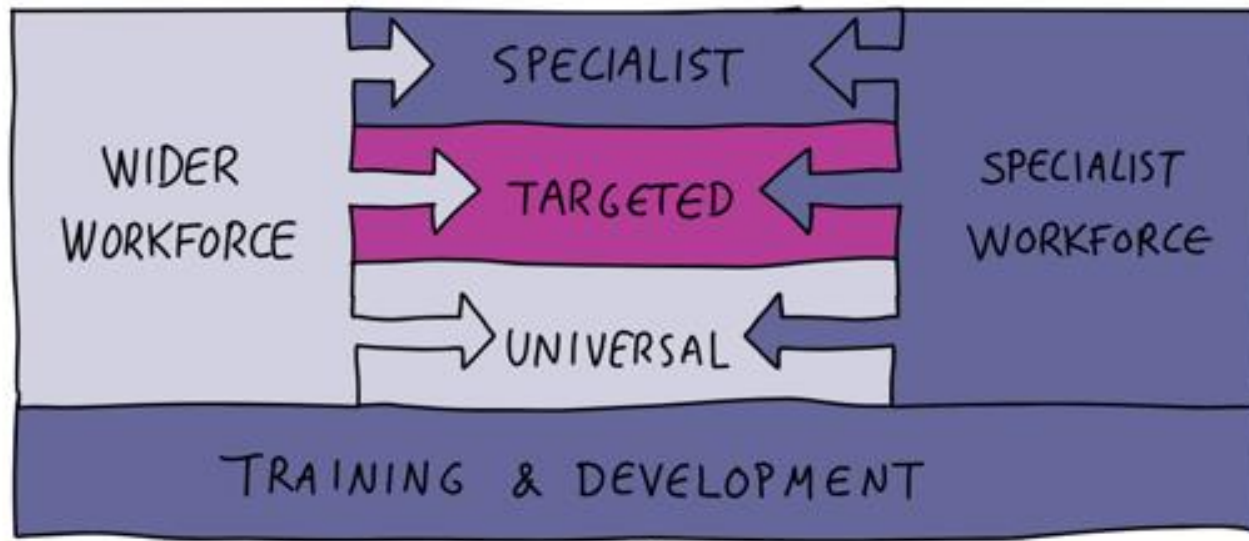


THIS REQUIRES A SHIFT IN THINKING WHEN IT COMES TO CURRENT PRACTICE AND SERVICE DELIVERY.



BusinessIllustrator.com



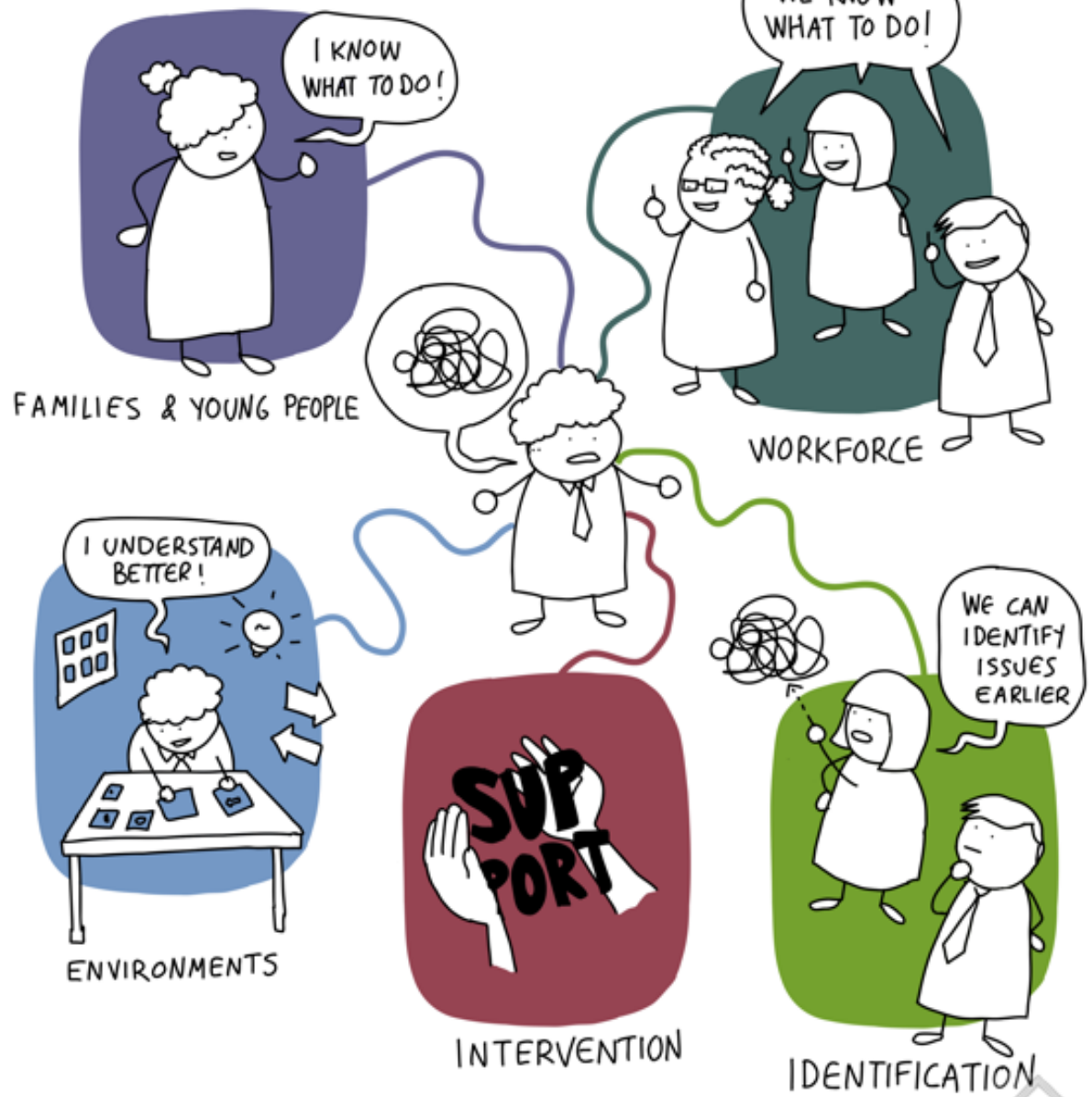


businessillustrator.com





# THE 5 STRANDS



businessillustrator.com





# THE BALANCED SYSTEM OUTCOMES FRAMEWORK

SPECIALIST

TARGETED

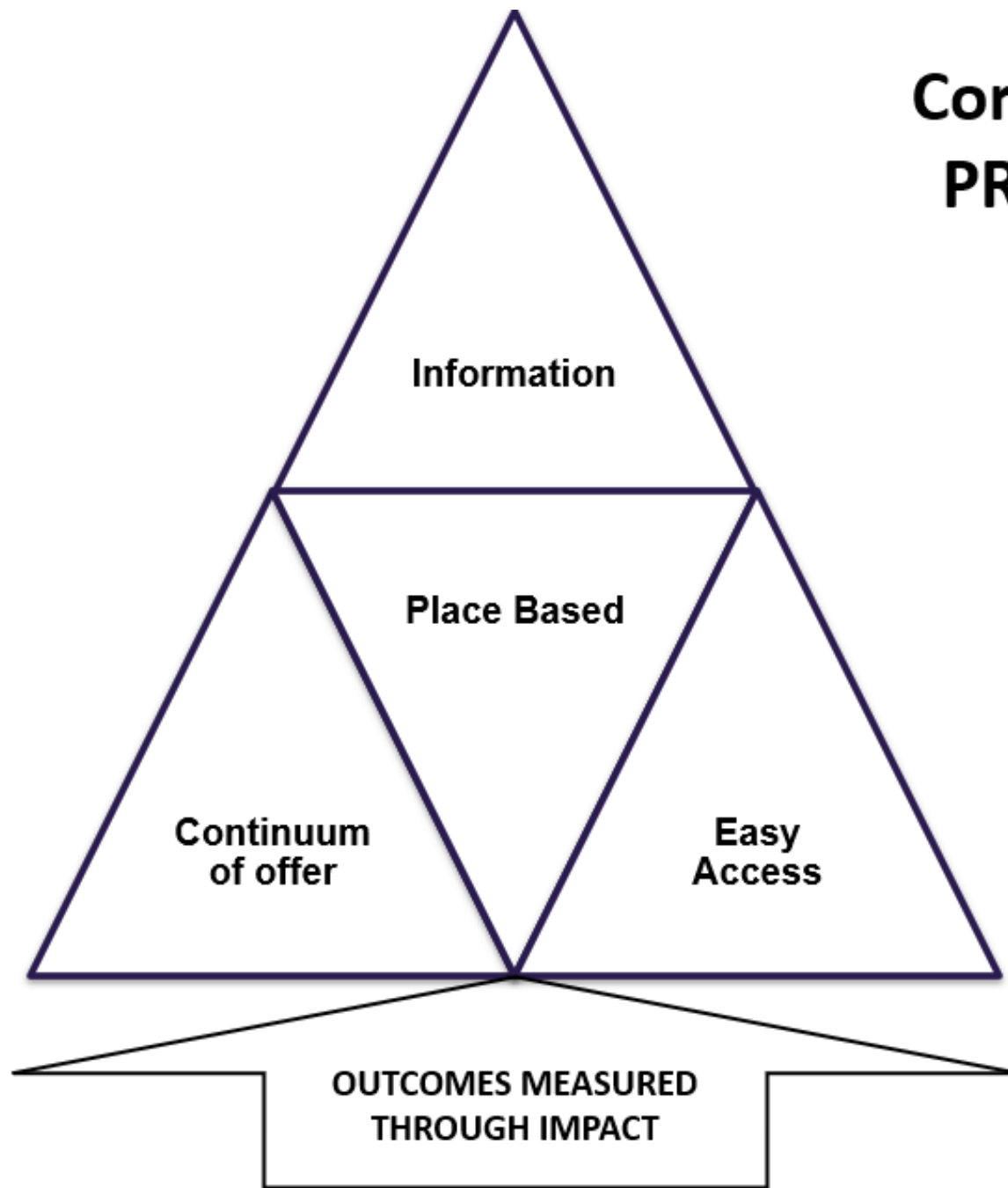
UNIVERSAL

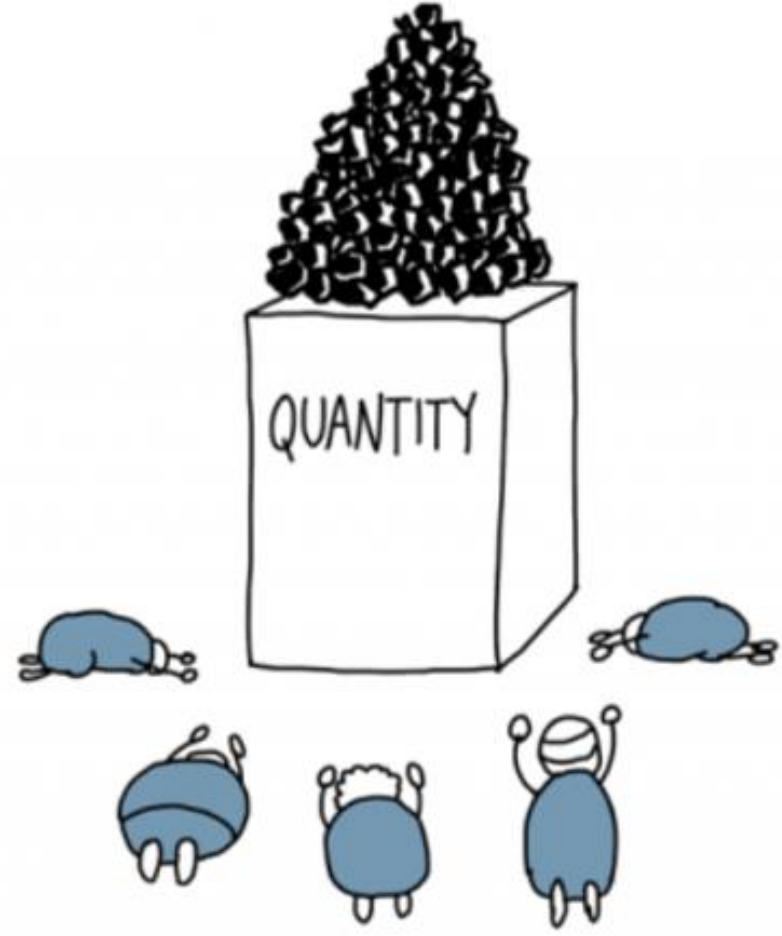
	FAMILY SUPPORT	ENVIRONMENT	WORKFORCE	IDENTIFICATION	INTEVERNTION
SPECIALIST					
TARGETED					
UNIVERSAL					

Source: Leanstack



# Core Delivery PRINCIPLES





BUSINESSILLUSTRATOR.COM/CONFUSED-CEO



# THE BALANCED SYSTEM<sup>®</sup>

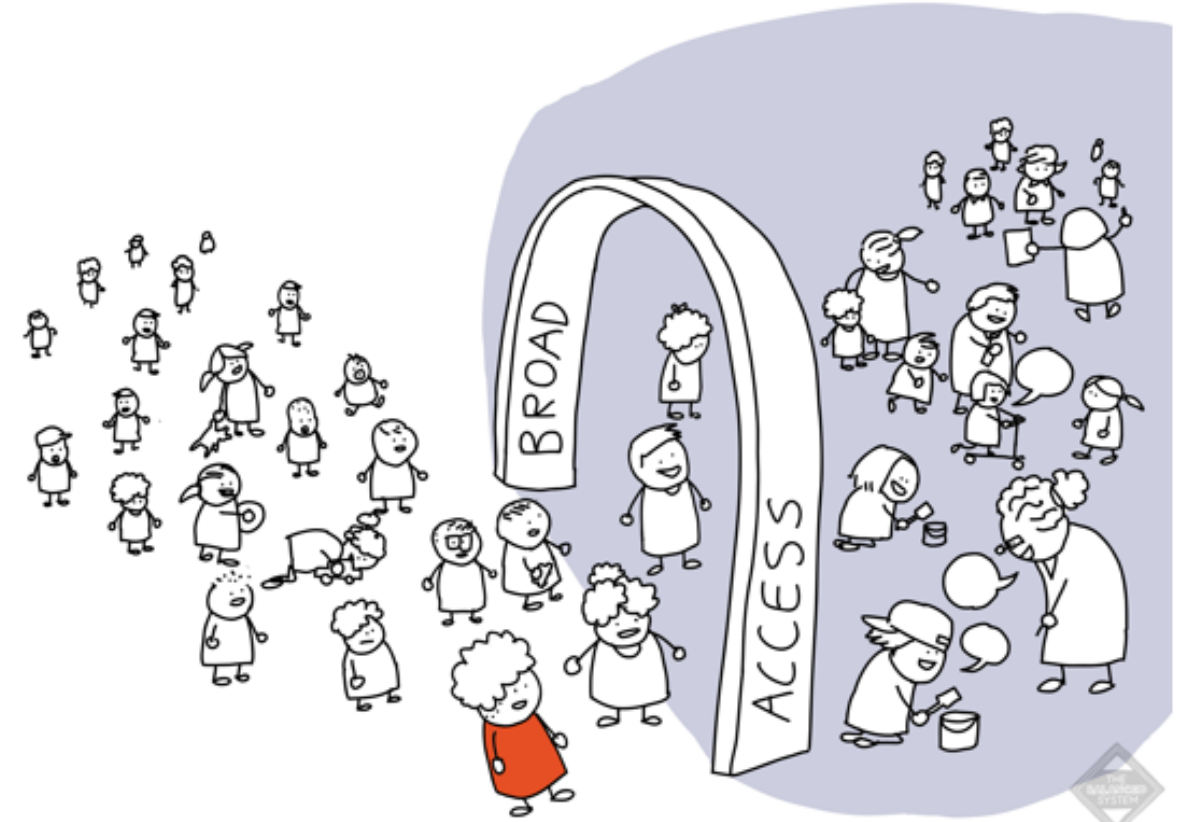
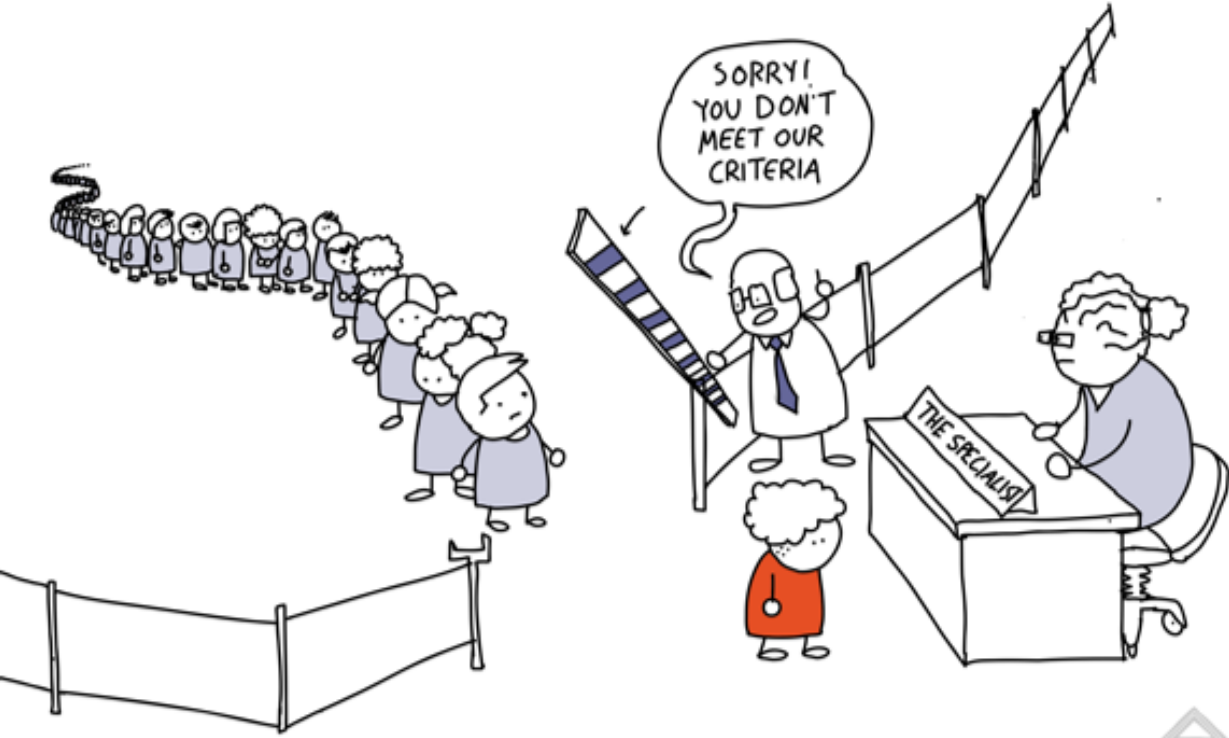
## OUTCOME FRAMEWORK

	QUANTITY	QUALITY
EFFORT	<p><b>LEVEL 1 INPUT</b></p> <p>HOW MUCH DID WE DO?</p> <p>TRADITIONAL MEASURES OF ACTIVITY AND INPUTS</p>	<p><b>LEVEL 3 IMPLEMENTATION</b></p> <p>HOW WELL DID WE DO IT?</p> <p>MEASURING WHETHER THE INPUTS WERE OF A HIGH QUALITY</p>
EFFECT	<p><b>LEVEL 2 REACH</b></p> <p>IS ANYONE BETTER OFF?</p> <p>MEASURING ACCESS TO THE INPUTS DELIVERED</p>	<p><b>LEVEL 4 IMPACT</b></p> <p>DID IT MAKE A DIFFERENCE?</p> <p>FOR THE INDIVIDUAL? FOR A GROUP? FOR A POPULATION</p>





# Easy Access

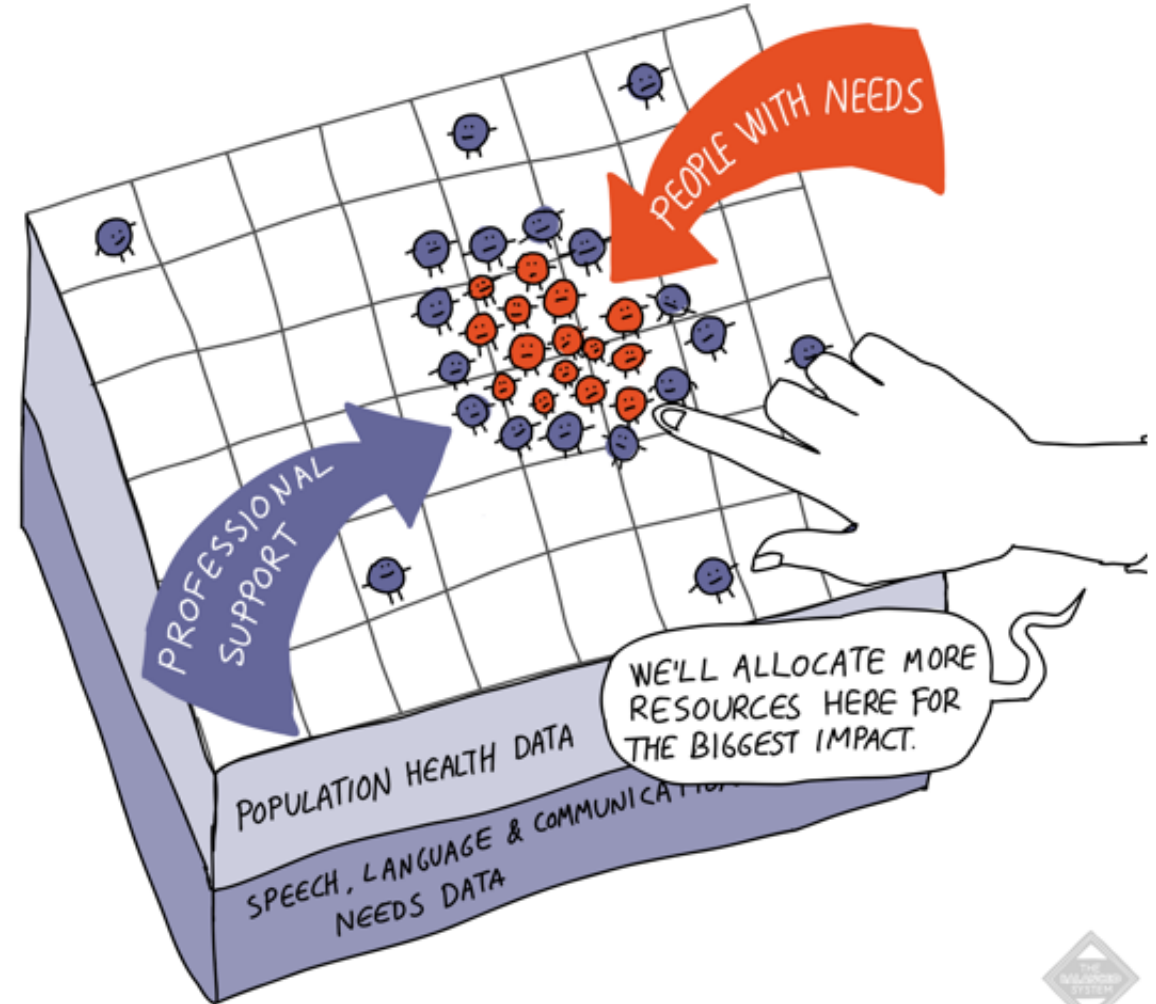
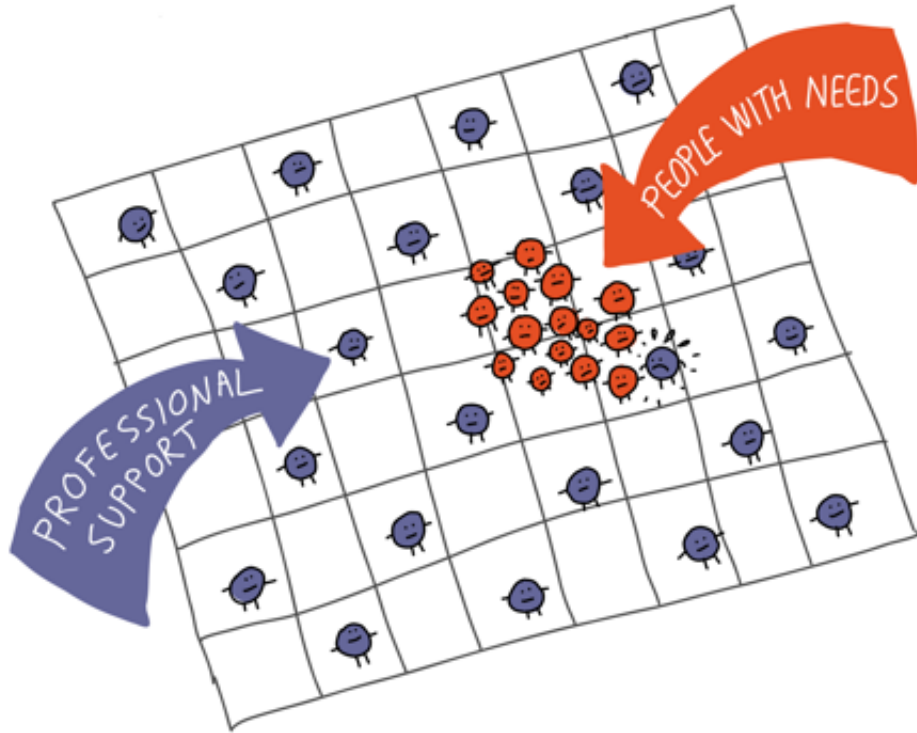


businessillustrator.com

businessillustrator.com

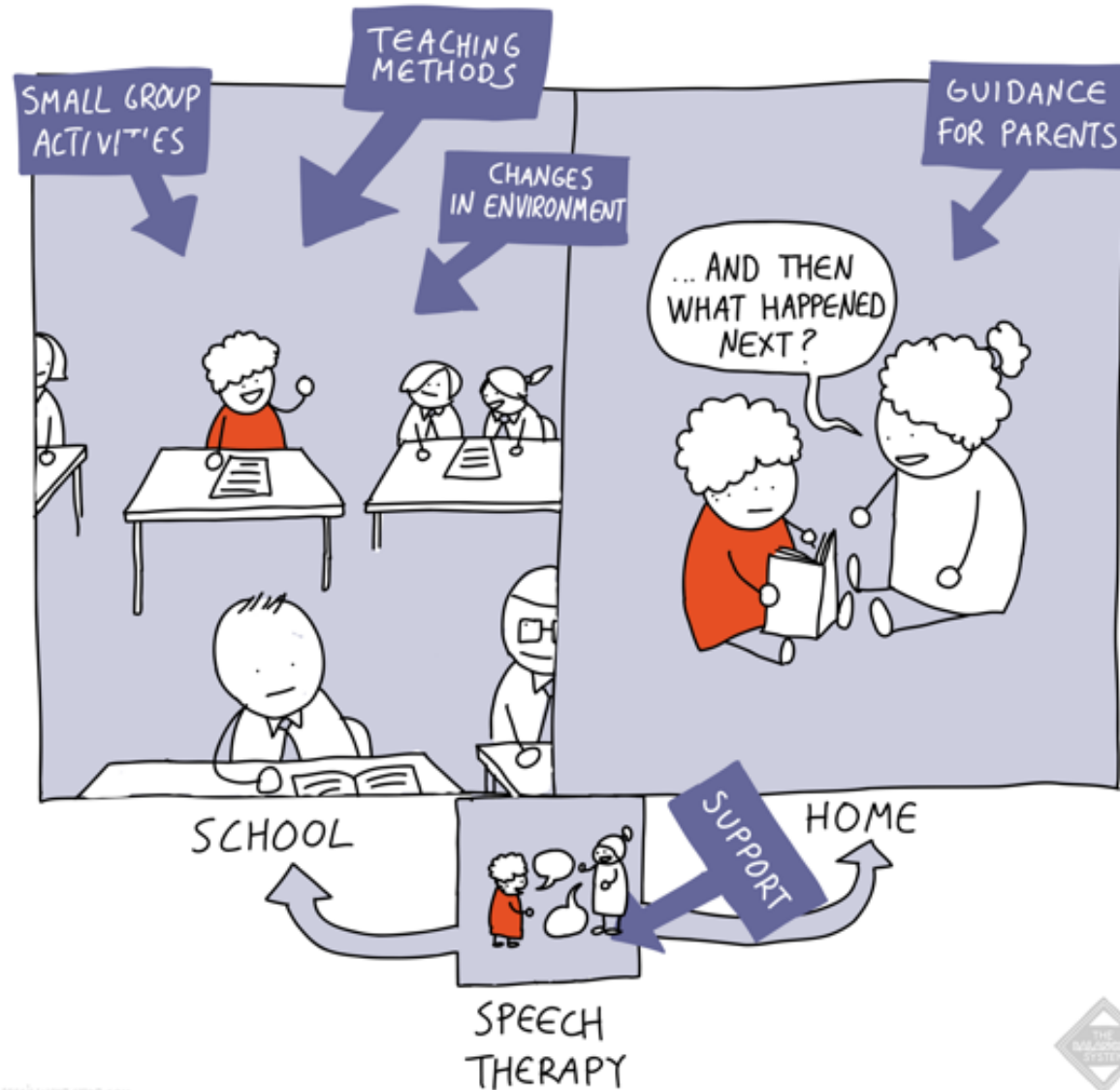


# Placed Based





THE BALANCED SYSTEM APPROACH BUILDS THE SUPPORT INTO THE EVERY DAY LIFE OF A CHILD.

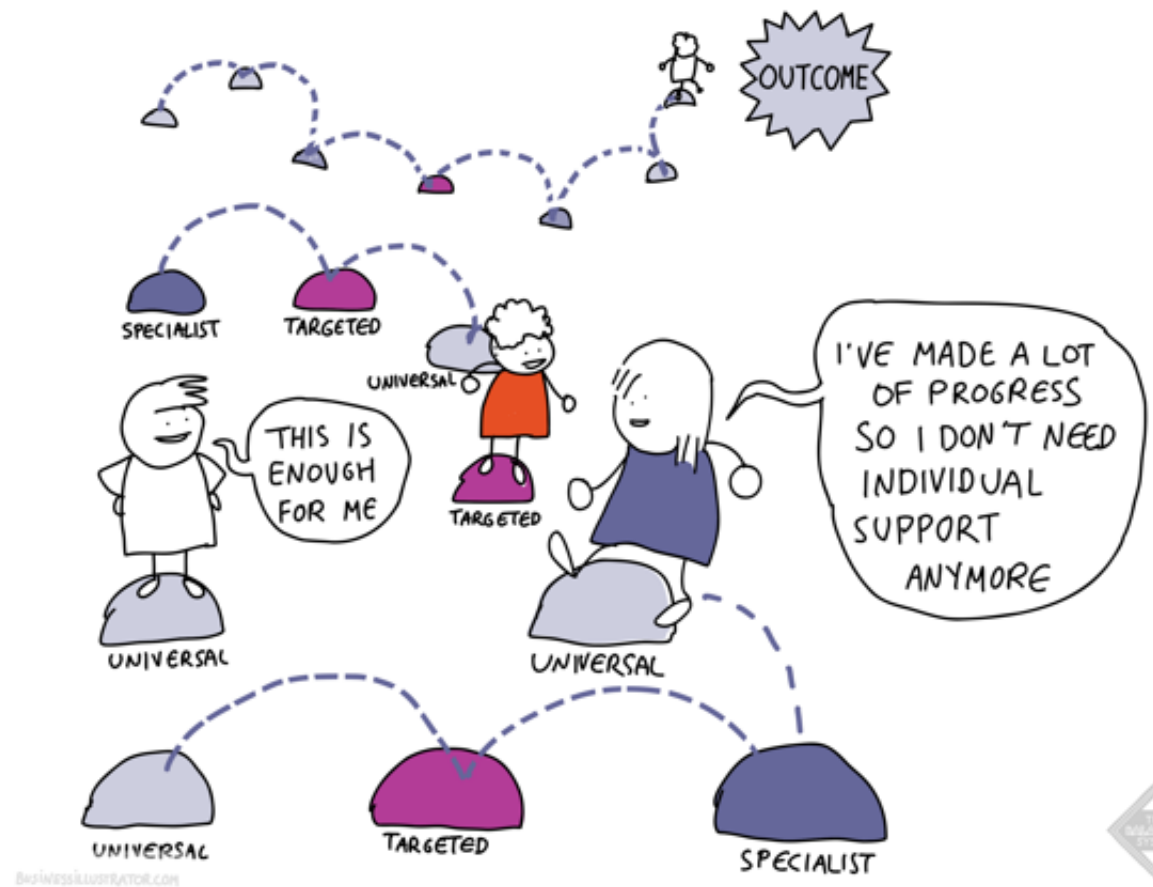
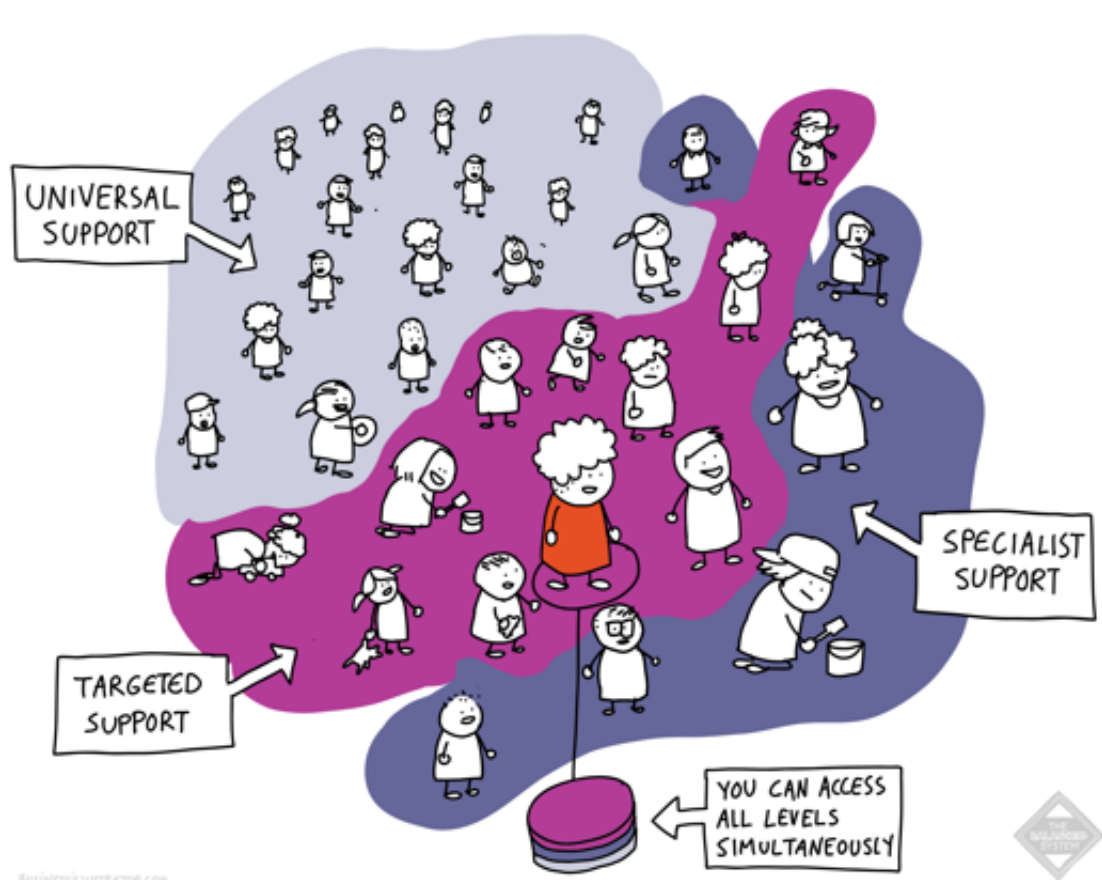


businessillustrator.com



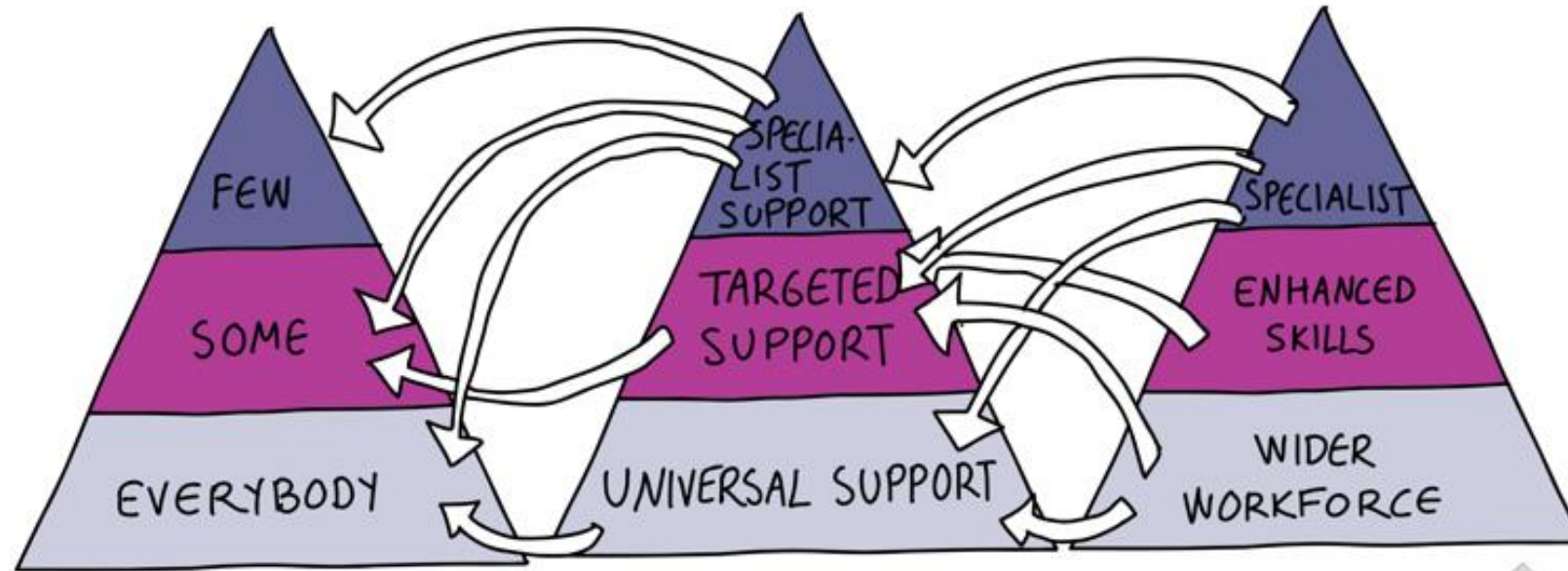


# Continuum of Offer





# Integrated Workforce



BusinessIllustrator.com





THE BALANCED SYSTEM DRAWS ON THE SKILLS OF DIFFERENT PEOPLE WORKING TOGETHER.

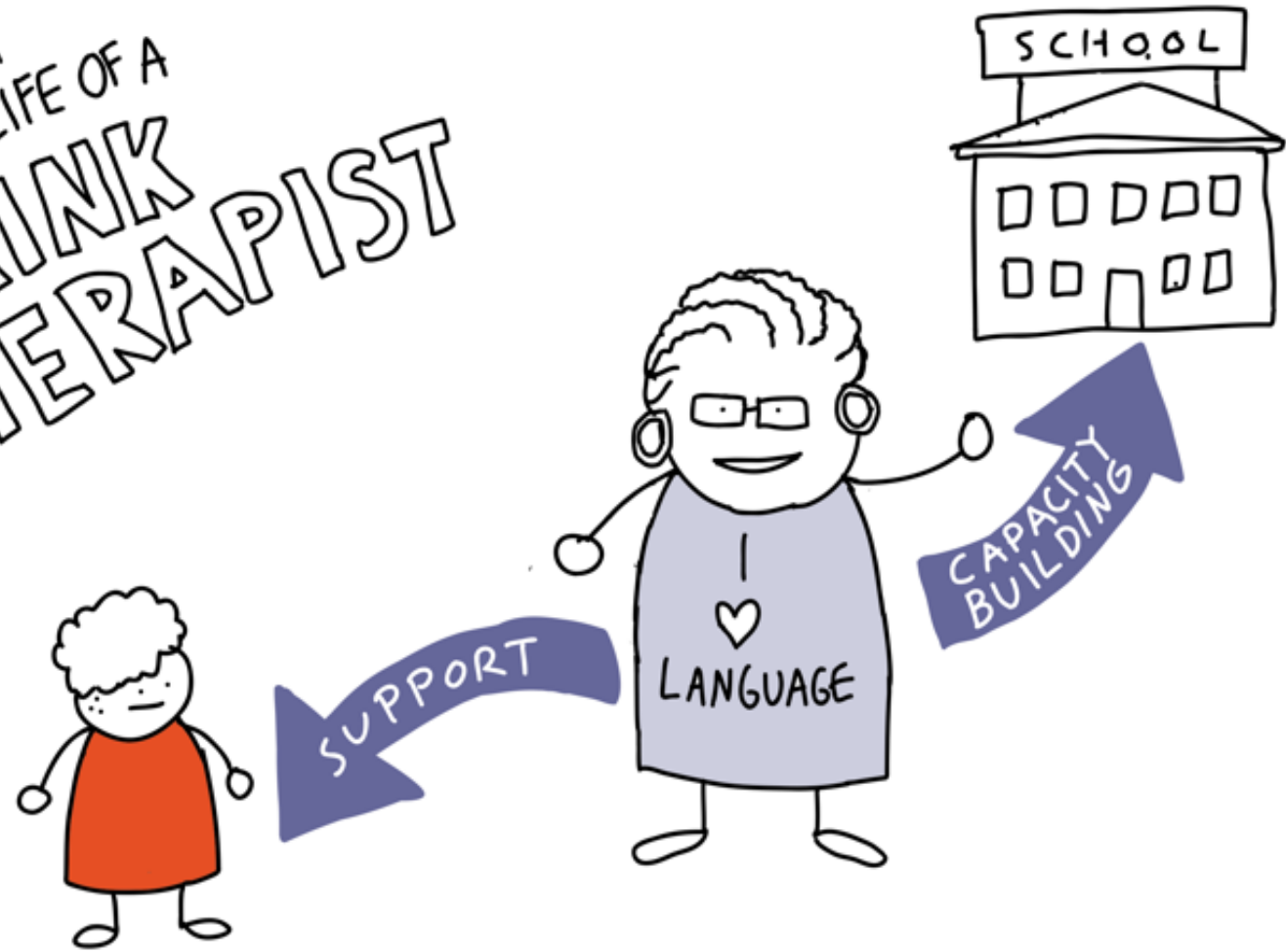


www.businessillustrator.com





# IN A DAY IN THE LIFE OF A LINK THERAPIST

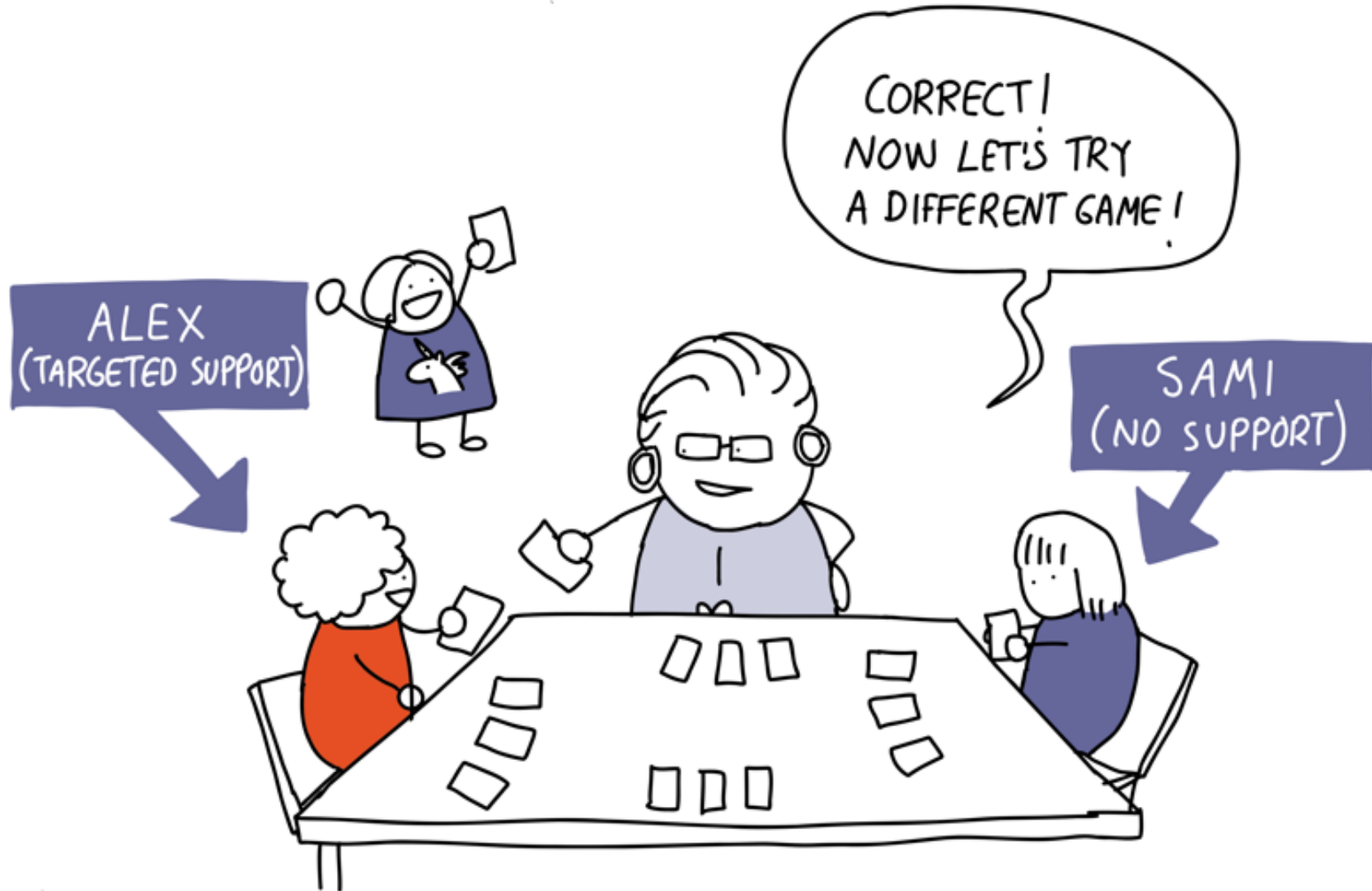


BUSINESSILLUSTRATOR.COM





# MORNING: SMALL GROUP ACTIVITIES IN CLASS



BusinessIllustrator.com





THEN INDIVIDUAL WORK WITH ALEX.



BUSINESSILLUSTRATOR.COM





# AFTERNOON : OBSERVING CHILDREN IN THE PLAYGROUND

YET ANOTHER CONFLICT THAT SEEMS TO STEM FROM A MISUNDERSTANDING.



I'M GOING TO RAISE THIS WITH THE TEACHER

Businessillustrator.com



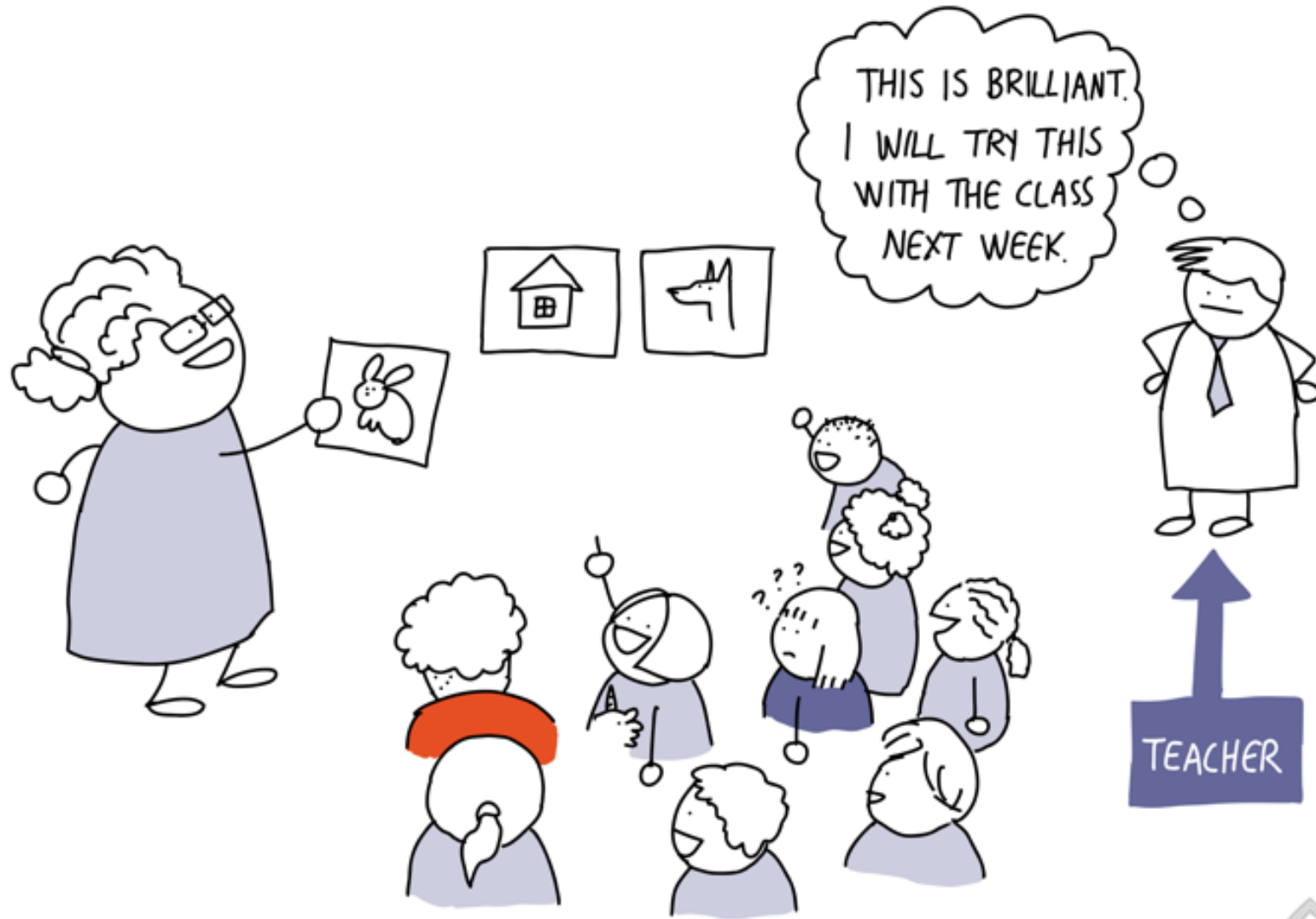


# MEETING WITH THE TEACHER





# AFTERNOON: ACTIVITIES WITH THE WHOLE CLASS



BUSINESSILLUSTRATOR.COM





## TRAINING TEACHING ASSISTANTS

